

# Balflex®



**HYDRAULIC  
HOSE  
ASSEMBLING  
MACHINES**



# INDEX

---

<b>P16_HP</b> ENERPAC MANUAL PUMP CRIMPING MACHINE 1"	2
<b>P16_AP</b> ENERPAC AIR PUMP CRIMPING MACHINE 1"	3
<b>P20_HP</b> ENERPAC MANUAL PUMP CRIMPING MACHINE 1.1/2"	4
<b>P20_AP</b> ENERPAC AIR PUMP CRIMPING MACHINE 1.1/2"	5
<b>P20_CS</b> 12V BATTERY CRIMPING MACHINE 1.1/2"	6
<b>P20</b> ELECTRIC CRIMPING MACHINE 1.1/2"	7
<b>P32</b> ELECTRIC CRIMPING MACHINE 2"	8
<b>P32D</b> ELECTRIC CRIMPING MACHINE 2" with PLC Control	9
<b>P120</b> ELECTRIC CRIMPING MACHINE 2" with PLC Control	10
<b>V100</b> LOW PRESSURE CRIMPING MACHINE	11
<b>SK50</b> ELECTRIC SKIVING MACHINE 2"	11
<b>CM50</b> ELECTRIC CUTTING MACHINE 2"	12
<b>CM400</b> ELECTRIC CUTTING MACHINE UP TO 2" SIX SPIRALS	13
<b>CM400_AP</b> ELECTRIC CUTTING MACHINE UP TO 2" SIX SPIRALS WITH PNEUMATIC INPUT	13
<b>90.DM.6</b> HOSE REEL 6 PLATES	14

# P16\_HP

## ENERPAC MANUAL PUMP CRIMPING MACHINE 1"

TECHNICAL DATA	
Crimping range (mm)	10-45
Crimping force (kN)	955
Crimping force (tons)	95
Hose size (inches)	2 Wire DN25 - 1"
Die set	P16
Max. opening (mm)	+20
Master die D/L (mm)	39/64
Control	Manual Gauge
Operation	Enerpac Hand Pump
Length (mm)	331
Width (mm)	401
Height (mm)	271
Total Weight (kg)	33



### Option model 90.P16\_HPZ



PART NUMBER	P16/6.8	P16/8	P16/10	P16/12	P16/14*	P16/16*	P16/19*	P16/23*	P16/27*	P16/31*
CRIMPING RANGE (mm)	6.8-8.8	8.0-10.0	10.0-12.0	12.0-14.0	14.0-16.0	16.0-19.0	19.0-23.0	23.0-27.0	27.0-31.0	31.0-36.0
D (mm)	6.8	8	10	12	14	16	19	23	27	31
L (mm)	25	25	55	55	55	55	55	55	70	70

\* Standard die sets included; other are optional



# P16\_AP

## ENERPAC AIR PUMP CRIMPING MACHINE 1"

TECHNICAL DATA	
Crimping range (mm)	10-45
Crimping force (kN)	955
Crimping force (tons)	137
Hose size (inches)	2 Wire DN25 - 1"
Die set	P16
Max. opening (mm)	+20
Master die D/L (mm)	39/64
Control	Manual Gauge
Operation	Enerpac Air Pump
Length (mm)	331
Width (mm)	401
Height (mm)	271
Total Weight (kg)	38



PART NUMBER	P16/6.8	P16/8	P16/10	P16/12	P16/14*	P16/16*	P16/19*	P16/23*	P16/27*	P16/31*
<b>CRIMPING RANGE (mm)</b>	6.8-8.8	8.0-10.0	10.0-12.0	12.0-14.0	14.0-16.0	16.0-19.0	19.0-23.0	23.0-27.0	27.0-31.0	31.0-36.0
<b>D (mm)</b>	6.8	8	10	12	14	16	19	23	27	31
<b>L (mm)</b>	25	25	55	55	55	55	55	55	70	70

\* Standard die sets included; other are optional

# P20\_HP

## ENERPAC MANUAL PUMP CRIMPING MACHINE 1.1/2"

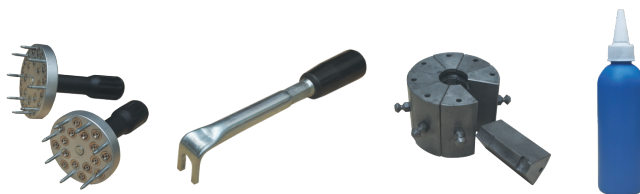
TECHNICAL DATA	
Crimping range (mm)	10-61
Crimping force (kN)	1370
Crimping force (tons)	137
Hose size (inches)	2 Wire Braid 1.1/2" (DN38) / 4 Spirals 1.1/4" (DN31)
Diet set	P20
Max. opening (mm)	+25
Master die D/L (mm)	84/80
Control	Manual Gauge
Operation	Enerpac Hand Pump
QC tool	Included
Length (mm)	550
Width (mm)	380
Height (mm)	380
Total Weight (kg)	102



PART NUMBER	P20/6.8	P20/8	P20/10	P20/12	P20/14**	P20/16**	P20/19**	P20/23**	P20/27**	P20/31**	P20/36**	P20/41**	P20/47**	P20/54
<b>CRIMPING RANGE (mm)</b>	6.8-8.8	8.0-10.0	10.0-12.0	12.0-14.0	14.0-16.0	16.0-19.0	19.0-23.0	23.0-27.0	27.0-31.0	31.0-36.0	36.0-41.0	41.0-47.0	47.0-54.0	54.0-61.0
<b>D (mm)</b>	6.8	8	10	12	14	16	19	23	27	31	36	41	47	54
<b>L (mm)</b>	25	25	55	55	55	55	55	55	70	70	75	75	85	85

\* Standard die sets included; other are optional

### ACCESSORIES

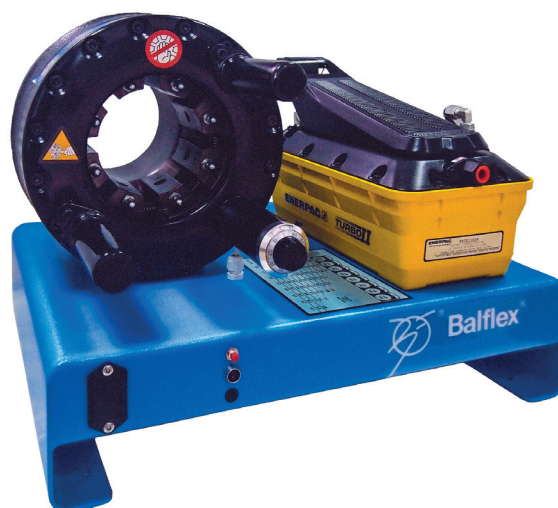




# P20\_AP

## ENERPAC AIR PUMP CRIMPING MACHINE 1.1/2"

TECHNICAL DATA	
Crimping range (mm)	10-61
Crimping force (kN)	1370
Crimping force (tons)	137
Hose size (inches)	2 Wire Braid 1.1/2" (DN38) / 4 Spirals 1.1/4" (DN31)
Die set	P20
Max. opening (mm)	+25
Master die D/L (mm)	84/80
Control	Manual Gauge
Operation	Enerpac Air Pump
QC tool	Included
Length (mm)	550
Width (mm)	380
Height (mm)	380
Total Weight (kg)	105



PART NUMBER	P20/6.8	P20/8	P20/10	P20/12	P20/14*	P20/16*	P20/19*	P20/23*	P20/27*	P20/31*	P20/36*	P20/41*	P20/47*	P20/54
<b>CRIMPING RANGE (mm)</b>	6.8-8.8	8.0-10.0	10.0-12.0	12.0-14.0	14.0-16.0	16.0-19.0	19.0-23.0	23.0-27.0	27.0-31.0	31.0-36.0	36.0-41.0	41.0-47.0	47.0-54.0	54.0-61.0
<b>D (mm)</b>	6.8	8	10	12	14	16	19	23	27	31	36	41	47	54
<b>L (mm)</b>	25	25	55	55	55	55	55	55	70	70	75	75	85	85

\* Standard die sets included; other are optional

### ACCESSORIES



# P20\_CS

12V BATTERY CRIMPING MACHINE 1.1/2"

TECHNICAL DATA	
Crimping range (mm)	10-61
Crimping force (kN)	1370
Crimping force (tons)	137
Hose size (inches)	2 Wire Braid 1.1/2" (DN38) / 4 Spirals 1.1/4" (DN31)
Diet set	P20
Max. opening (mm)	+25
Master die D/L (mm)	84/80
Control	Manual Gauge
Operation	12V / 210A Battery
QC tool	Included
Length (mm)	550
Width (mm)	380
Height (mm)	380
Total Weight (kg)	105



PART NUMBER	P20/6.8	P20/8	P20/10	P20/12	P20/14*	P20/16*	P20/19*	P20/23*	P20/27*	P20/31*	P20/36*	P20/41*	P20/47*	P20/54
<b>CRIMPING RANGE (mm)</b>	6.8-8.8	8.0-10.0	10.0-12.0	12.0-14.0	14.0-16.0	16.0-19.0	19.0-23.0	23.0-27.0	27.0-31.0	31.0-36.0	36.0-41.0	41.0-47.0	47.0-54.0	54.0-61.0
<b>D (mm)</b>	6.8	8	10	12	14	16	19	23	27	31	36	41	47	54
<b>L (mm)</b>	25	25	55	55	55	55	55	55	70	70	75	75	85	85

\* Standard die sets included; other are optional

## ACCESSORIES





# P20

## ELECTRIC CRIMPING MACHINE 1.1/2"

TECHNICAL DATA	
Crimping range (mm)	10-61
Crimping force (kN)	1370
Crimping force (tons)	137
Crimpings/hour	600/850
Noise Level (db(A))	71
Hose size (inches)	2 Wire Braid 1.1/2" (DN38) / 4 Spirals 1.1/4" (DN31)
Die set	P20
Max. opening (mm)	+25
Master die D/L (mm)	84/80
Control	Manual Gauge
Motor (kW)	3
Motor (HP)	4
Voltage (V)*	380 Tri-phasic
QC tool	Included
Pedal	Included
Die Set Rack	Included
Length (mm)	760
Width (mm)	560
Height (mm)	800
Total Weight (kg)	182

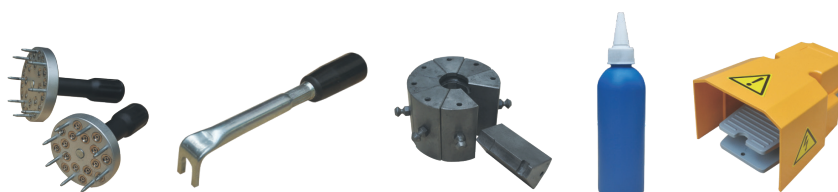


PART NUMBER	P20/6.8	P20/8	P20/10	P20/12	P20/14**	P20/16**	P20/19**	P20/23**	P20/27**	P20/31**	P20/36**	P20/41**	P20/47**	P20/54
<b>CRIMPING RANGE (mm)</b>	6.8-8.8	8.0-10.0	10.0-12.0	12.0-14.0	14.0-16.0	16.0-19.0	19.0-23.0	23.0-27.0	27.0-31.0	31.0-36.0	36.0-41.0	41.0-47.0	47.0-54.0	54.0-61.0
<b>D (mm)</b>	6.8	8	10	12	14	16	19	23	27	31	36	41	47	54
<b>L (mm)</b>	25	25	55	55	55	55	55	55	70	70	75	75	85	85

\* Other voltage on request

\*\* Standard die sets included; other are optional

## ACCESSORIES





# P32

## ELECTRIC CRIMPING MACHINE 2"

TECHNICAL DATA	
Crimping range (mm)	10-87
Crimping force (kN)	2000
Crimping force (tons)	200
Crimpings/hour	700/850
Noise Level (db(A))	71
Hose size (inches)	2 Wire Braid 2" (DN51) / 4 Spirals 2" (DN51)
Die set	P32
Max. opening (mm)	+33
Master die D/L (mm)	99/80
Control	Manual Gauge
Motor (kW)	4
Motor (HP)	5.3
Voltage (V)*	380 Tri-phasic
QC tool	Included
Pedal	Included
Die Set Rack	Included
Length (mm)	760
Width (mm)	560
Height (mm)	800
Total Weight (kg)	265

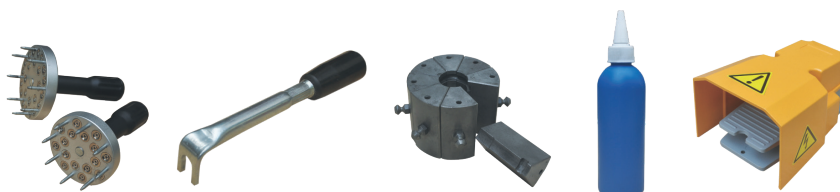


PART NUMBER	P32/6.8	P32/8	P32/10	P32/12	P32/14 **	P32/16 **	P32/19 **	P32/22 **	P32/26 **	P32/30 **	P32/34 **	P32/39 **	P32/45 **	P32/51 **	P32/57 **	P32/63 **	P32/69 **	P32/74	P32/78
CRIMPING RANGE (mm)	6.8-8.8	8.0-10.0	10.0-12.0	12.0-14.0	14.0-16.0	16.0-19.0	19.0-23.0	22.0-26.0	26.0-30.0	30.0-34.0	34.0-39.0	39.0-45.0	45.0-51.0	51.0-57.0	57.0-63.0	63.0-69.0	69.0-75.0	74.0-80.0	78.0-87.0
D (mm)	6.8	8	10	12	14	16	19	22	26	30	34	39	45	51	57	63	69	74	78
L (mm)	25	25	55	55	55	55	55	70	70	70	75	75	90	90	100	110	110	110	110

\* Other voltage on request

\*\* Standard die sets included; other are optional

### ACCESSORIES





# P32D

## ELECTRIC CRIMPING MACHINE 2" with Digital Display (PLC) and Control

TECHNICAL DATA	
Crimping range (mm)	10-87
Crimping force (kN)	2000
Crimping force (tons)	200
Crimpings/hour	700/850
Noise Level (db(A))	71
Hose size (inches)	2 Wire Braid 2" (DN51) / 4 Spirals 2" (DN51)
Die set	P32
Max. opening (mm)	+33
Master die D/L (mm)	99/80
Control	PLC (Siemens) Language free - Graphic Symbols
Siemens Motor (kW)	4
Siemens Motor (HP)	5.3
Voltage (V)*	380 Tri-phasic
QC tool	Included
Pedal	Included
Die Set Rack	Included
Length (mm)	760
Width (mm)	560
Height (mm)	800
Total Weight (kg)	265

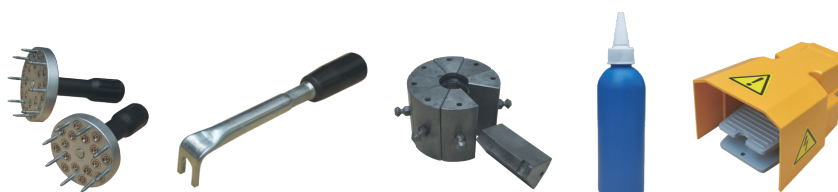


PART NUMBER	P32/6.8	P32/8	P32/10	P32/12	P32/14 **	P32/16 **	P32/19 **	P32/22 **	P32/26 **	P32/30 **	P32/34 **	P32/39 **	P32/45 **	P32/51 **	P32/57 **	P32/63 **	P32/69 **	P32/74	P32/78
CRIMPING RANGE (mm)	6.8-8.8	8.0-10.0	10.0-12.0	12.0-14.0	14.0-16.0	16.0-19.0	19.0-23.0	22.0-26.0	26.0-30.0	30.0-34.0	34.0-39.0	39.0-45.0	45.0-51.0	51.0-57.0	57.0-63.0	63.0-69.0	69.0-75.0	74.0-80.0	78.0-87.0
D (mm)	6.8	8	10	12	14	16	19	22	26	30	34	39	45	51	57	63	69	74	78
L (mm)	25	25	55	55	55	55	55	70	70	70	75	75	90	90	100	110	110	110	110

\* Other voltage on request

\*\* Standard die sets included; other are optional

### ACCESSORIES



# P120

ELECTRIC CRIMPING MACHINE up to R15 Hose - 2" with Digital Display (PLC) and Control

TECHNICAL DATA	
Crimping range (mm)	10-87
Crimping force (kN)	2800
Crimping force (tons)	280
Crimpings/hour	3000 (on 1/2")
Noise Level (db(A))	71
Hose size (inches)	2 Wire Braid 2" (DN51) / 6 Spirals 2" (DN51)
Die set	P32
Max. opening (mm)	66
Master die D/L (mm)	99/97
Control	PLC (Siemens) Language free - Graphic Symbols
Siemens Motor (kW)	5.5
Siemens Motor (HP)	7.5
Voltage (V)*	380 Tri-phasic
Quick Change (QC) tool	Included
Foot Pedal	Included
Die Set Rack	Included
Back Stop	Included
Dimensions / crimping unit (mm)	length 940 width 800 height 1635
Dimensions / hydraulic unit (mm)	length 820 width 640 height 992
Total Weight (kg) (without Oil)	1150
Oil Tank capacity (liter)	140

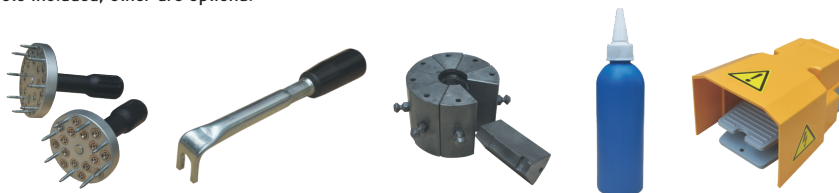


PART NUMBER	P32/6.8	P32/8	P32/10	P32/12	P32/14 **	P32/16 **	P32/19 **	P32/22 **	P32/26 **	P32/30 **	P32/34 **	P32/39 **	P32/45 **	P32/51 **	P32/57 **	P32/63 **	P32/69 **	P32/74 **	P32/78
CRIMPING RANGE (mm)	6.8-8.8	8.0-10.0	10.0-12.0	12.0-14.0	14.0-16.0	16.0-19.0	19.0-23.0	22.0-26.0	26.0-30.0	30.0-34.0	34.0-39.0	39.0-45.0	45.0-51.0	51.0-57.0	57.0-63.0	63.0-69.0	69.0-75.0	74.0-80.0	78.0-87.0
D (mm)	6.8	8	10	12	14	16	19	22	26	30	34	39	45	51	57	63	69	74	78
L (mm)	25	25	55	55	55	55	55	70	70	70	75	75	90	90	100	110	110	110	110

\* Other voltage on request

\*\* Standard die sets included; other are optional

## ACCESSORIES





# V100

## LOW PRESSURE CRIMPING MACHINE

TECHNICAL DATA	
Crimping range (mm)	9-30mm
Diet set	2 sets (DN3-8 ; DN10-16)
Operation	Manual
Length (mm)	350
Width (mm)	235
Height (mm)	760
Total Weight (kg)	17,5



# SK50

## ELECTRIC SKIVING MACHINE 2"

TECHNICAL DATA	
Internal Skiving Range	3/4" (DN19) - 2" (DN51)
External Skiving Range	1/4" (DN6) - 2" (DN51)
Internal Skiving tools	6
External Skiving tools	10
Speed of Tool Rotation (r/min)	145
Motor (kW)	0.4
Motor (HP)	0.53
Voltage (V)*	380 Tri-phasic
Noise Level (db(A))	55
Pedal	Included
Length (mm)	400
Width (mm)	300
Height (mm)	1050
Total Weight (kg)	57



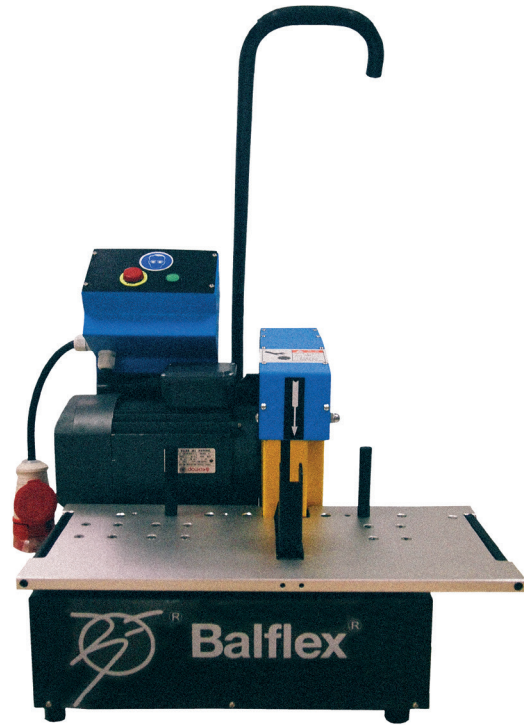
\* Other voltage on request

# CM50

## ELECTRIC CUTTING MACHINE 2"

TECHNICAL DATA	
Serrated Blade (mm)	300X4.5X32
Frequency 50Hz (rpm)	2850
Frequency 60Hz (rpm)	3370
Motor (kW)	4
Motor (HP)	5.3
Voltage (V)*	380 Tri-phasic
Noise Level (db(A))	65
Length (mm)	545
Width (mm)	550
Height (mm)	580
Total Weight (kg)	78

\* Other voltage on request





# CM400

ELECTRIC CUTTING MACHINE UP TO 2" SIX SPIRALS

TECHNICAL DATA	
Serrated Blade (mm)	400X4.0X50
Frequency 50Hz (rpm)	2850
Frequency 60Hz (rpm)	3370
Motor (kW)	5.5
Motor (HP)	7.5
Voltage (V)*	380 Tri-phasic
Noise Level (db(A))	65
Length (mm)	750
Width (mm)	760
Height (mm)	1200
Total Weight (kg)	195

\* Other voltage on request



# CM400\_AP

ELECTRIC CUTTING MACHINE UP TO 2" SIX SPIRALS WITH PNEUMATIC INPUT

TECHNICAL DATA	
Serrated Blade (mm)	400X4.0X50
Frequency 50Hz (rpm)	2850
Frequency 60Hz (rpm)	3370
Pneumatic input Min. (Bar)	4
Motor (kW)	5.5
Motor (HP)	7.5
Voltage (V)*	380 Tri-phasic
Noise Level (db(A))	65
Length (mm)	1020
Width (mm)	660
Height (mm)	1380
Total Weight (kg)	197

\* Other voltage on request



# 90.DM.6

## HOSE REEL 6 PLATES

MODEL	90.DM.6
Dimensions	1850 x 1000 x 12000mm
Total Weight	117 kg
Basket Dimensions	1100 x 120mm
Total Loading Weight	600 kg

\* Other design on request







## **PRODUCTS LIMITED WARRANTY**

The products sold by Balflex® are warranted to our customers to be free from defects in material and workmanship when shipment at Balflex® warehouses takes place.

All warranty claims shall be made present in writing to Balflex®. Balflex® liability hereunder is limited to the purchase price of the merchandise proving to be defective or, at balflex sole discretion, to the replacement of such merchandise upon its authorized return to Balflex®.

This warranty is in lieu of and excludes all other warranties, or conditions expressed, implied, statutory or otherwise created under applicable law including, but not limited to the warranty of merchantability and the warranty of fitness for a particular purpose.

In addition, this warranty shall not apply and will be null and void to any products or portions thereof that have been subject to abuse, misuse, improper installation, maintenance or operation, electrical failure or abnormal conditions and to products that have been tampered with, altered, modified, repaired, reworked by anyone not approved by balflex or used in any other manner inconsistent with any Balflex® instructions or specifications. Balflex® disclaims any liability for any hose assemblies which have not been produced with in conformance with Balflex® assembly recommendations and parts.

In no event shall balflex have any liability whatsoever to any person, including without limitation, any immediate buyer, purchaser or other third party, for any special, punitive, incidental or consequential damages, including without limitation, profit loss or customer loss, loss or damage to physical property of customer or any other person and loss of anticipated revenue, profits, goodwill, savings or other economic loss of customer or any other person.

Specification subject to change without prior notice.  
Errors and omission excluded.



## U.S.A. and Canada

6000 South Loop East Freeway  
Houston, Tx 77033  
Estados Unidos de América  
Tel: (1) 713-928-6064  
Email: [sales@balflex.com](mailto:sales@balflex.com)  
[www.balflexusa.com](http://www.balflexusa.com)

## Europe Headquarters

R. Bouça dos Estilhadouros, 226/254  
4445-044 Alfena, Portugal  
Tel: (351) 229 698 160  
Email: [balflex@balflex.com](mailto:balflex@balflex.com)  
[www.balflex.com](http://www.balflex.com)

## Germany

Franckensteinstraße 8  
77749 Hohberg  
Tel: (49) 07808 4318857  
Email: [info@2bhydraulik.de](mailto:info@2bhydraulik.de)  
[www.balflex.com](http://www.balflex.com)

## South America

R. Padre Cesari Lelli, 1014  
Rodovia BR-116  
CEP 83420-000 Quatro Barras/PR  
Brasil  
Tel: (55) 41 3671 3450  
Email: [comercial@balflex.com.br](mailto:comercial@balflex.com.br)  
[www.balflex.com](http://www.balflex.com)

[www.balflex.com](http://www.balflex.com)

An ISO 9001:2015 Company:

